

TERRO[®]-PCO Liquid Ant Bait Stations

Pre-Filled – Ready-to-Use • No Drips, Spill or Mess • For Control of Sweet Eating Ants

Active Ingredient:

Sodium Tetraborate Decahydrate (Borax)	5.40%
Other Ingredients	94.60%
Total	100.00%
EPA Reg. No. 149-8-64405	EPA Est. 64405-TN-1

**KEEP OUT OF REACH OF CHILDREN
CAUTION**

DIRECTIONS FOR USE

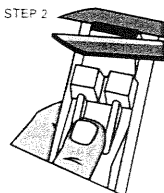
It is a violation of Federal law to use this product in a manner inconsistent with its labeling.

FOR USE IN AND AROUND: Homes, Hospitals, Restaurants, Apartments, Grocery Stores, Institutional Buildings, Schools, Cafeterias, Warehouses, Storage Areas, Food Processing Plants, Mobile Homes, Boats, Military Bases, Theaters, Nursing Homes and on Military, Commercial and Cruise Ships.

ATTRACTS AND KILLS ALL COMMON HOUSEHOLD ANTS INCLUDING: Argentine ants, Ghost ants, Cornfield ants, Pavement ants, Acrobat ants, White-footed ants, Little black ants, Odorous house ants, Crazy ants, Big-headed ants and other sweet-eating ants.

Terro[®]-PCO Liquid Ant Bait now comes as an easy-to-use, pre-filled liquid ant bait. Ants will enter, feed and return to the nest where they will pass on the Terro[®]-PCO Liquid Ant Bait to the rest of the colony.

1. Break pre-filled baits apart from the plastic frame.
2. Hold bait upright and cut off colored section.
3. Place baits, label side up, near ant trails or close to where ants are numerous. Place additional baits anywhere ants may enter the home. For best results, use seven baits to ensure sufficient supply for the ants.
4. Monitor regularly for activity but do not interfere with the ants or baits. Replace with additional baits when first set is depleted.
5. Once ants are controlled, replace baits every three months to keep ants from returning.



DO NOT USE in edible product areas of food handling establishments, restaurants or other areas where food is commercially prepared or processed. Do not use in serving areas while food is exposed. Avoid contamination of feed and foodstuffs. Place bait in areas inaccessible to children and pets.

STORAGE AND DISPOSAL

STORAGE: Store in a cool dry place. Do not store where children or animals may gain access.

DISPOSAL: **If empty:** Do not reuse this container. Place in trash or offer for recycling if available. **If partly filled:** Call your local solid waste agency for disposal instructions. Never place unused product down any indoor or outdoor drain.

Distributed by:



100 Nisus Drive
Rockford, TN 37853
800-264-0870
www.nisuscorp.com

Terro[®] is registered trademark of Senoret Chemical Company, Inc. Nisus[®] is a registered trademark of Nisus Corporation.